

## Test Method

Potency Analysis by  
High Performance Liquid Chromotography

### Cannabinoid Potency Results

- Stronger than advertised
- Exactly as advertised
- Weaker than advertised

Test Accreditation #: 77802

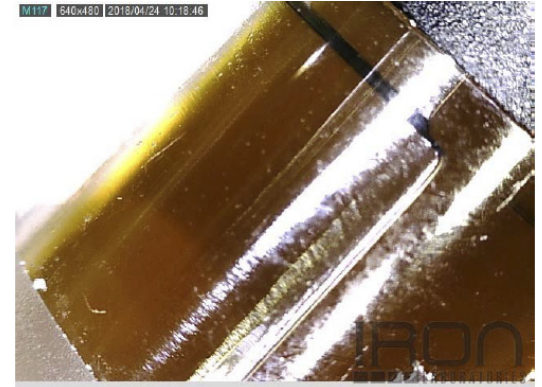
Test Certificate #: 105743-001

**Sample Details**  
**Product:** Alternate Vape Cartridge (Full-Spectrum) 420mg  
**Sample:** 042018K  
**Sampled Product:** Infused Product  
**Method:** FE04 HPLC1100-1  
**Molds/Pests:** N/A

**Test Conditions**  
**Scale:** XS205-MI2  
**Temp.:** 23 °C  
**Baro Pressure:** 982.3 hPa

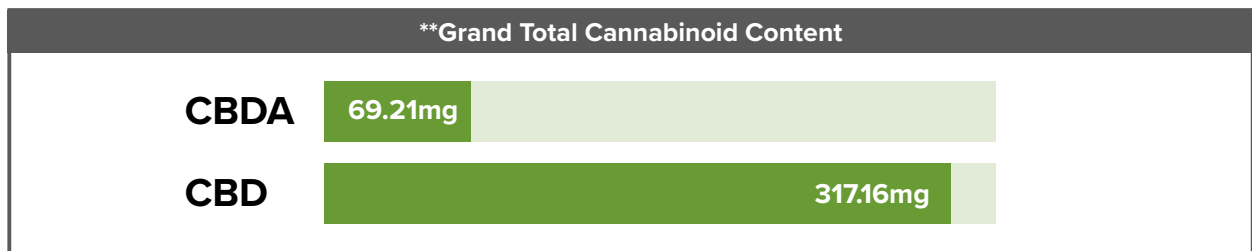
**Sample ID#: 105743**

Test Date: 04/23/2018



**Simple Overview**  
**Advertised:** 420mg CBD/CBDa per cartridge (0.9ml)  
**Results:** 352.4mg CBD + 76.9mg CBDa per 1g  
**\*\*Grand Total:** 386.37mg CBD/CBDa per cartridge (0.9ml)

Test Compounds	CBDA	CBD	TOTAL	CBD Activation	THC
Amount	76.9 mg/g	352.4 mg/g	429.3 mg/g	82%	<.3%†
Min. Value	0.1 mg/g	0.1 mg/g	-	-	-
Amount per Serving~	76.9 mg/g	352.4 mg/g	429.3 mg/g	<b>Serving Size~: 1g</b>	-
Uncertainty‡	±5% RSD	±5% RSD	±5% RSD	-	-



†Uncertainty measurement is for the test procedure and the instrument used; and is calculated in accordance with the ISO "Guide of Uncertainty in Measurement" (GUM) Test Results and uncertainty are only representative of the sample submit to Iron Laboratories. Uncertainty does not account for any uncertainty in the sampling. The measurement of uncertainty is the expanded uncertainty and is an estimate of uncertainty calculated with normal distribution and a coverage factor of 2 (K=2) to approximate a 95% confidence level.

All lab testing is performed by a third party facility at one of the labs listed below. The results are taken from a sample of this product. This Certificate of Analysis (COA) is for internal use only and shall not be replicated or shared without written approval from CBD Guru.

\*\*Grand Total is determined by calculating the results from the sample size to the total product size.

%RSD = Relative Standard Deviation Min. Value = Minimum Detectable Amount

†This passes our quality control guidelines for non-psychoactive industrial hemp oil. For questions or concerns, please contact us.



ISO/IEC 17025:2005 Accredited



Management Signature